

**SUBDIVISION PLAN OF:
LOT 1, SECTION 14, RANGE 8,
MOUNTAIN DISTRICT, PLAN EPP76052.**

Pursuant to Section 67 of the Land Title Act.
BCGS 920 011



The intended plot size of this plan is 560mm in height by 864mm in width (D Size) when plotted at a scale of 1:750.

Integrated Survey Area No. 20, City of Nanaimo, NAD83 (CSRS) 10 0 BC 1 NW.
Grid bearings are derived from observations between geodetic control monuments 77H5295 & 90H9770.

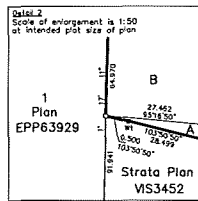
The UTM coordinates and estimated horizontal positional accuracy are derived from the MASCOI published coordinates and standard deviations for geodetic control monuments 77H5295 & 90H9770.
This plan shows horizontal ground-level distances unless otherwise specified. To compute grid distances, multiply ground-level distances by the average combined factor of 0.9996542 which has been derived from geodetic control monuments 77H5295 & 90H9770.

- Legend**
- Denotes Standard Iron Post Found
 - Denotes Standard Iron Post Placed
 - ⊠ Denotes Aluminum Post Found
 - ⊙ Denotes Non Standard Post Found
 - ⊕ Denotes Control Monument Found

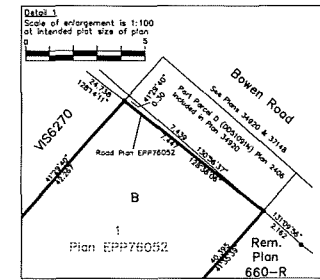
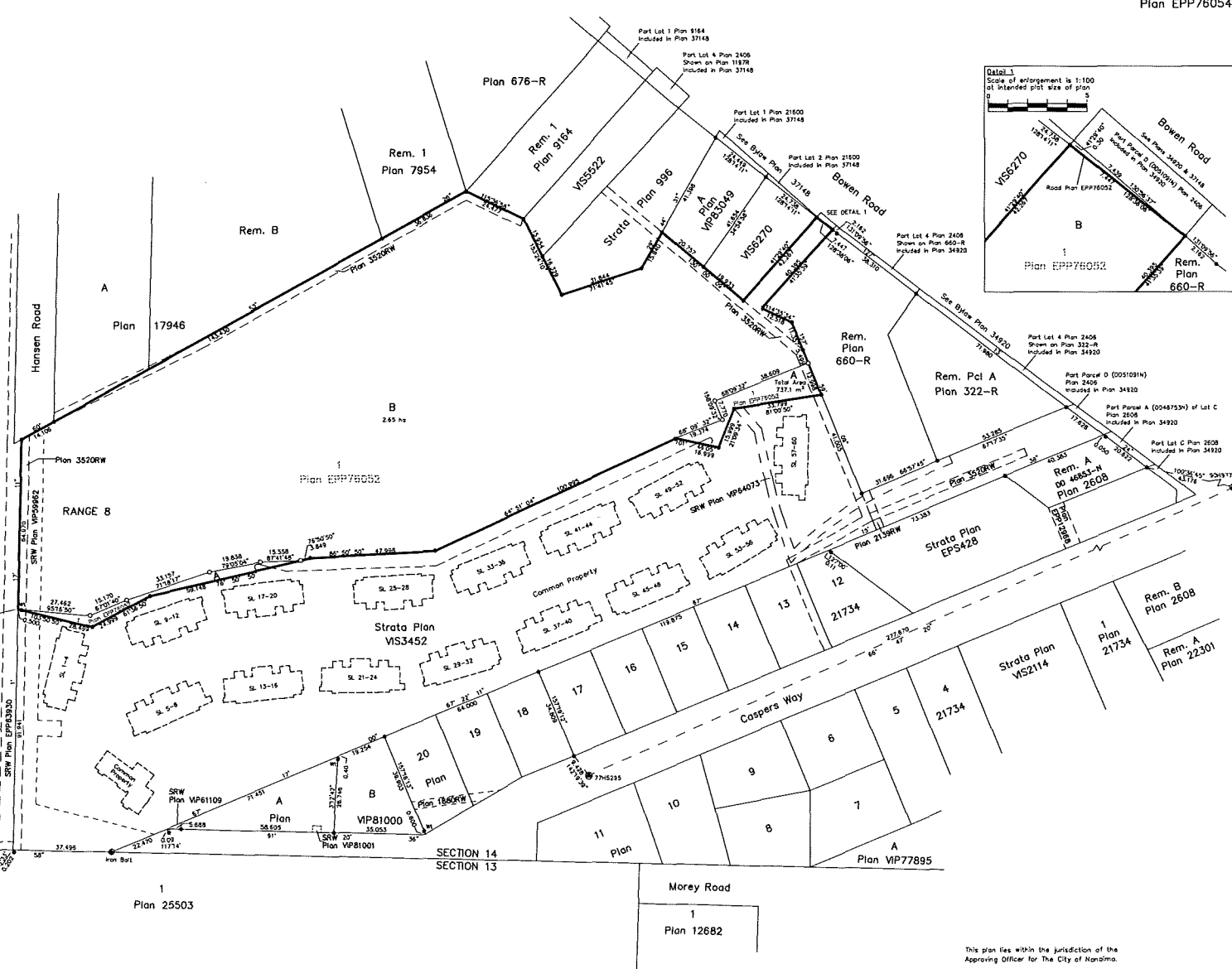
NOTE:
This plan shows one or more witness posts which are not set on the true corner(s).

Georeferencing Table					
Datum: NAD83(CSRS)(1997) 10 0 BC 1 NW					
CCM #	Tabular Marking	UTM Northing	UTM Easting	Estimated Horizontal Positional Accuracy	Combined Point Scale Factor
837262	77H5295	5447688.99	426744.93	0.01 metres	0.9996547
946229	90H9770	5447778.39	428999.76	0.01 metres	0.9996538

1
Plan EPP63929



SECTION 14
RANGE 8



Plan EPP76054

Turner Land Surveying Inc.
605 Comox Road
Nanaimo, B.C.
V9R 3J4
250-753-9778
ETax: 13-091

This plan lies within the jurisdiction of the Approving Officer for The City of Nanaimo.

This plan lies within the Regional District of Nanaimo.
The field survey represented by this plan was completed on the 22nd day of March, 2018.
Ryan J. Turner, BCLS 825